



**TOPSTONE**<sup>®</sup>  
The creator of stone surface

## MUNICIPAL USE OF TOPSTONE SURFACES

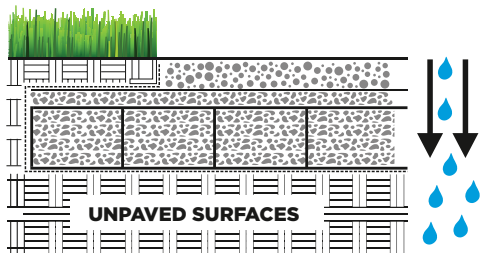


Infrastructure development in towns and villages and creation of new paved surfaces at the expense of permeable soil negatively affects the natural hydrologic cycle. Natural infiltration of rainwater, which is usually drained off, has increasingly been made impossible. If water runs off on paved surfaces into the sewer system or into waterways instead of being absorbed quickly, it becomes one of the reasons of local flooding. At the same time, the soil dries excessively in urban areas and the microclimate is changing. The amount of rainwater discharged into sewer has constantly increased.

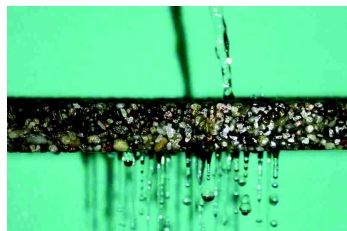
This trend has caused huge problems for our sewage network. This leads to the demand for a higher capacity of currently overwhelmed sewer networks, especially in times of intense rainfall, which put a further burden on the sewage system, and thus negatively impacts the cleaning process.

**The best solution is the infiltration of rainwater at the place of origin, which should also increase groundwater reserves.**

The best solution is WATER-PERMEABLE surface



Water-permeable system slows down rainwater runoff

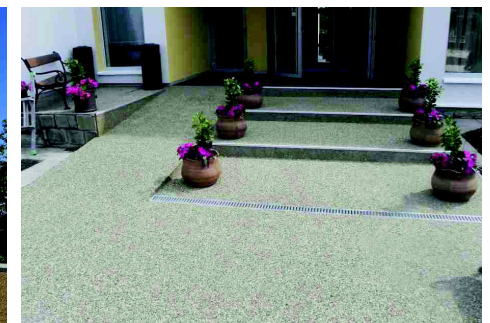
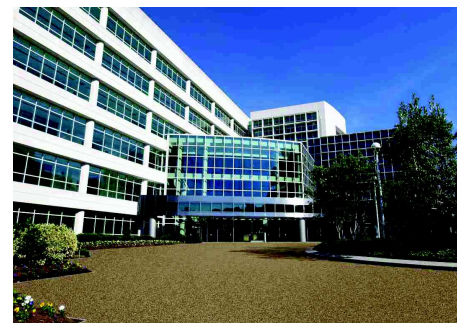
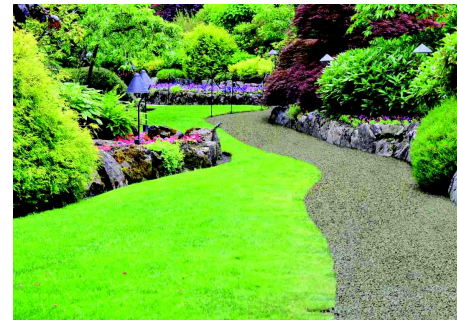


The aim of using water-permeable surface is to reduce the volume of rainwater as much as possible before connecting to the public sewer system. Rainwater can infiltrate into the ground, and the rainwater runoff into the sewage system is slowed down.

**At the same time, it allows COST SAVINGS - reducing the volume of water discharged to the sewer and the load on sewage treatment plants. Lower rain tax payment represents another significant saving.**

Basic rules for rainwater draining, including the determination of their volume, are described by Act no. 274/2001 Coll. on water supply and sewage systems for public use. If the rainwater is drained through the sewage system for public use, it is generally subject to charge, based on the sewage rates that apply to particular locations.

## TopStone system offers a solution for water-permeable surface



## TOPSTONE surfaces properties

